

**SCHOOL**

WAEP

**Trial WACE Examination, 2010**

**Question/Answer Booklet**

**MATHEMATICS:  
SPECIALIST  
3C/3D**

**Section One:  
Calculator-free**

If required by your examination administrator, please  
place your student identification label in this box

Student Number: In figures

--	--	--	--	--	--	--	--

In words

---

Your name

---

**Time allowed for this section**

Reading time before commencing work: 5 minutes

Working time for paper: 50 minutes

**Material required/recommended for this section**

***To be provided by the supervisor***

This Question/Answer booklet

Formula sheet

***To be provided by the candidate***

Standard items: pens, pencils, pencil sharpener, eraser, correction fluid, ruler, highlighters

Special items: nil

**Important note to candidates**

No other items may be used in this section of the examination. It is **your** responsibility to ensure that you do not have any unauthorised notes or other items of a non-personal nature in the examination room. If you have any unauthorised material with you, hand it to the supervisor **before** reading any further.

### Structure of this paper

Section	Number of questions available	Number of questions to be answered	Working time (minutes)	Marks available
Section One: Calculator-free	7	7	50	40
Section Two: Calculator-assumed	11	11	100	80
				120

### Instructions to candidates

- The rules for the conduct of Western Australian external examinations are detailed in the *Year 12 Information Handbook 2010*. Sitting this examination implies that you agree to abide by these rules.
- Write your answers in the spaces provided in this Question/Answer Booklet. Spare pages are included at the end of this booklet. They can be used for planning your responses and/or as additional space if required to continue an answer.
  - Planning: If you use the spare pages for planning, indicate this clearly at the top of the page.
  - Continuing an answer: If you need to use the space to continue an answer, indicate in the original answer space where the answer is continued, i.e. give the page number. Fill in the number of the question(s) that you are continuing to answer at the top of the page.
- Show all your working clearly.** Your working should be in sufficient detail to allow your answers to be checked readily and for marks to be awarded for reasoning. Incorrect answers given without supporting reasoning cannot be allocated any marks. For any question or part question worth more than two marks, valid working or justification is required to receive full marks. If you repeat an answer to any question, ensure that you cancel the answer you do not wish to have marked.
- It is recommended that you **do not use pencil** except in diagrams.

Section One: Calculator-free

(40 Marks)

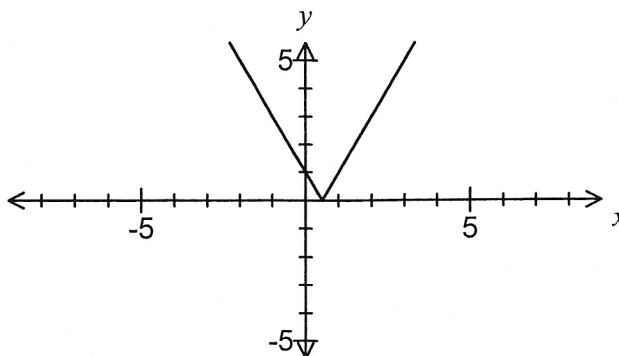
This section has **seven (7)** questions. Answer **all** questions. Write your answers in the space provided.

Working time for this section is 50 minutes.

Question 1

(4 marks)

The graph of  $f(x) = |2x - 1|$  is shown below.



- (a) Add the function  $g(x) = \frac{|x+2|}{2}$  to the graph. (1 mark)
- (b) Solve  $f(x) - g(x) \geq 0$ . (3 marks)

Question 2

(7 marks)

Two complex numbers are given by  $z = 2cis\frac{\pi}{3}$  and  $w = \sqrt{3} - i$ .

(a) Determine  $arg\frac{z}{w}$

(2 marks)

(b) Evaluate  $\left| w \times \overline{w \times z} \right|$ .

(3 marks)

(c) Find the complex number  $u$  given that  $\frac{z \times u}{2} = e^{\left(\frac{3\pi i}{4}\right)}$ .

(2 marks)

Question 3

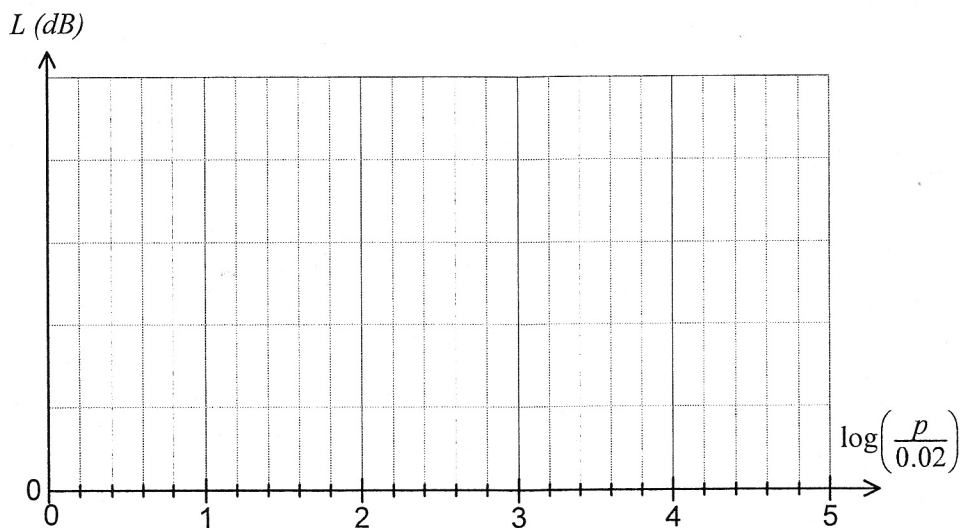
(4 marks)

The sound level  $L$ , in decibels (dB), for a single sound of pressure  $p$ , in millipascals (mPa), is calculated using the formula  $L = 20 \log \frac{p}{0.02}$ ,  $p > 0$ .

(a) Determine the sound level corresponding to a sound pressure of 0.02 mPa. (1 mark)

(b) Determine the sound pressure corresponding to a sound level of 80 dB. (1 mark)

(c) Sketch the graph of the above function on the axes below with  $\log \frac{p}{0.02}$  on the horizontal axis. Indicate the scale used on the vertical axis. (2 marks)



Question 4

(6 marks)

- (a) Prove by deduction that  $\cos 4\theta = 8 \cos^4 \theta - 8 \cos^2 \theta + 1$ .

You may assume all identities given on the standard formula sheet.

(3 marks)

- (b) Hence evaluate  $\int_0^{\pi/8} \cos^2 x - \cos^4 x \, dx$ .

(3 marks)

Question 5

(6 marks)

(a) Find the exact gradient of the curve  $y = 4^{3x-5}$  at the point (2, 4).

(3 marks)

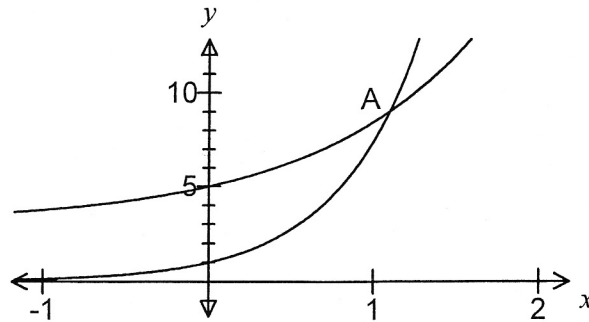
(b) Evaluate  $\int_0^4 \frac{e^{\sqrt{x}}}{\sqrt{x}} dx$ .

(3 marks)

Question 6

(6 marks)

The graphs of  $y = e^{2x}$  and  $y = 2e^x + 3$  intersect at the point A, shown on the graph below.



(a) Show that the  $x$ -coordinate of A is  $\log_e 3$ .

(3 marks)

(b) Determine the exact area in simplest form of the region bounded by the two curves and the  $y$ -axis.

(3 marks)



Question 7

(7 marks)

(a) If  $z^2 = -4 + 4i$  find

(i)  $z^4$

(1 mark)

(ii)  $z$

(3 marks)

(b) Find real numbers  $a$  and  $b$  such that  $(a + bi)(1 + 2i) = 2i$ .

(3 marks)



**Additional working space**

Question number(s): \_\_\_\_\_

**Additional working space**

Question number(s): \_\_\_\_\_



SCHOOL

WAEP

Trial WACE Examination, 2010

Question/Answer Booklet

**MATHEMATICS:  
SPECIALIST  
3C/3D**

**Section Two:  
Calculator-assumed**

If required by your examination administrator, please  
place your student identification label in this box

Student Number: In figures

--	--	--	--	--	--	--	--

In words

---

Your name

---

**Time allowed for this section**

Reading time before commencing work: 10 minutes

Working time for paper: 100 minutes

**Material required/recommended for this section**

***To be provided by the supervisor***

This Question/Answer booklet

Formula sheet (retained from Section One)

***To be provided by the candidate***

Standard items: pens, pencils, pencil sharpener, eraser, correction fluid, ruler, highlighters

Special items: drawing instruments, templates, notes on two unfolded sheets of A4 paper, and up to three calculators satisfying the conditions set by the Curriculum Council for this course.

**Important note to candidates**

No other items may be used in this section of the examination. It is **your** responsibility to ensure that you do not have any unauthorised notes or other items of a non-personal nature in the examination room. If you have any unauthorised material with you, hand it to the supervisor **before** reading any further.

### Structure of this paper

Section	Number of questions available	Number of questions to be answered	Working time (minutes)	Marks available
Section One: Calculator-free	7	7	50	40
Section Two: Calculator-assumed	11	11	100	80
				120

### Instructions to candidates

- The rules for the conduct of Western Australian external examinations are detailed in the *Year 12 Information Handbook 2010*. Sitting this examination implies that you agree to abide by these rules.
- Write your answers in the spaces provided in this Question/Answer Booklet. Spare pages are included at the end of this booklet. They can be used for planning your responses and/or as additional space if required to continue an answer.
  - Planning: If you use the spare pages for planning, indicate this clearly at the top of the page.
  - Continuing an answer: If you need to use the space to continue an answer, indicate in the original answer space where the answer is continued, i.e. give the page number. Fill in the number of the question(s) that you are continuing to answer at the top of the page.
- Show all your working clearly.** Your working should be in sufficient detail to allow your answers to be checked readily and for marks to be awarded for reasoning. Incorrect answers given without supporting reasoning cannot be allocated any marks. For any question or part question worth more than two marks, valid working or justification is required to receive full marks. If you repeat an answer to any question, ensure that you cancel the answer you do not wish to have marked.
- It is recommended that you **do not use pencil** except in diagrams.

Section Two: Calculator-assumed

(80 Marks)

This section has **eleven (11)** questions. Answer **all** questions. Write your answers in the space provided.

Working time for this section is 100 minutes.

---

Question 8

(5 marks)

A line and a plane are given by  $\mathbf{r} = -\mathbf{i} + 3\mathbf{j} + 2\mathbf{k} + \lambda(-2\mathbf{j} + 4\mathbf{k})$  and  $\mathbf{r} \cdot (\mathbf{i} - 2\mathbf{j} + 2\mathbf{k}) = 33$ .

(a) Find the position vector of the point of intersection of the line and plane.

(2 marks)

(b) Find the acute angle between the line and plane.

(3 marks)



Question 9

(8 marks)

The quadrilateral with vertices  $A(0, 0)$ ,  $B(1, 2)$ ,  $C(-3, 1)$  and  $D(-2, -1)$  is transformed by the matrix

$\mathbf{M} = \begin{bmatrix} 0 & -1 \\ -3 & 0 \end{bmatrix}$  on to the quadrilateral  $A'B'C'D'$ .

- (a) Determine the coordinates of  $A'$  and  $C'$ . (2 marks)
- (b) The area of quadrilateral  $A'B'C'D'$  is 18 square units. What is the area of quadrilateral  $ABCD$ ? (1 mark)
- (c) Matrix  $\mathbf{M}$  represents a combination of transformation  $\mathbf{P}$  followed by transformation  $\mathbf{Q}$ . If the matrix for transformation  $\mathbf{P} = \begin{bmatrix} -3 & 0 \\ 0 & 1 \end{bmatrix}$ , determine the matrix for transformation  $\mathbf{Q}$  and describe the geometric transformation  $\mathbf{Q}$  represents. (3 marks)
- (d) The quadrilateral  $A'B'C'D'$  then undergoes a shear of factor  $k$  parallel to the  $x$ -axis such that the image of  $C'$  lies on the  $y$ -axis. Determine the value of  $k$ . (2 marks)



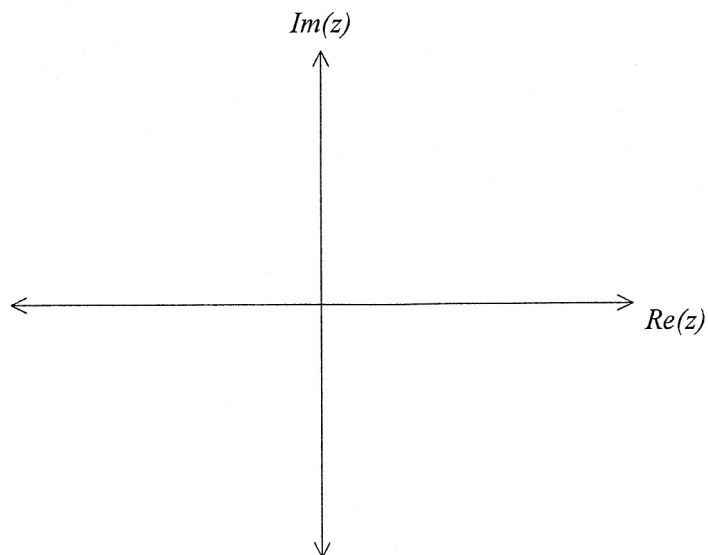
Question 10

(7 marks)

Sketch the following regions in the complex plane.

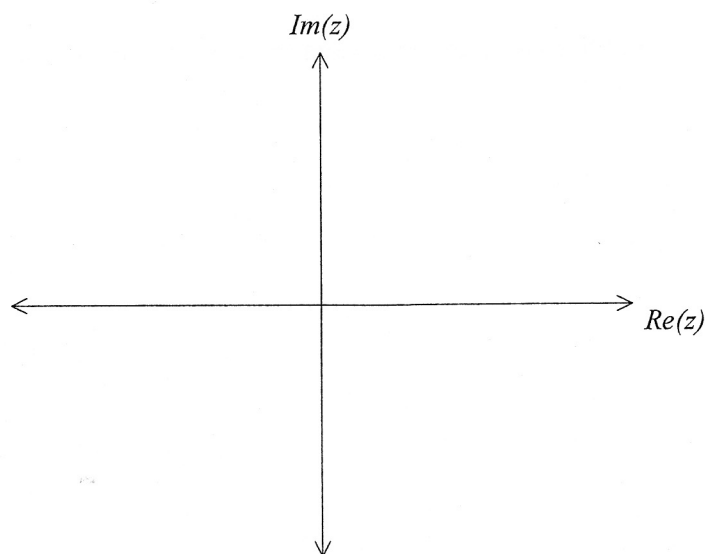
(a)  $-\frac{2\pi}{3} \leq \arg(z) \leq \frac{\pi}{3}$ .

(2 marks)



(b)  $|z + 1 - 2i| \geq |z + 2 - 4i|$ .

(3 marks)



(c) For the region in (b) above, state the minimum value of  $|z|$ .

(2 marks)



Question 11

(6 marks)

- (a) A curve is defined parametrically as  $x = 3 + 2 \sin \theta$  and  $y = \theta - 3 \cos \theta$ . Find the equation of the tangent to the curve when  $\theta = 0$ . (3 marks)

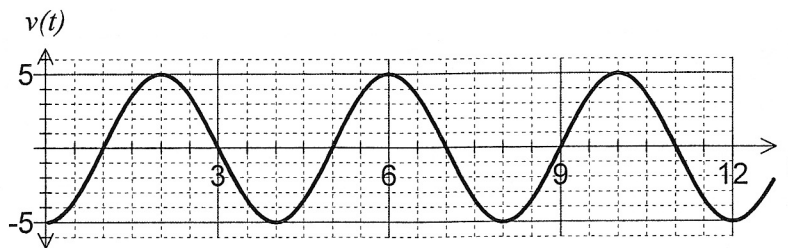
- (b) Using the substitution  $u = \sqrt{x-1}$ , the definite integral  $\int_1^5 \frac{x+1}{\sqrt{x-1}} dx$  can be written as

$\int_d^e au^2 + bu + c du$ . Find the value of the constants  $a$ ,  $b$ ,  $c$ ,  $d$  and  $e$ . (3 marks)

Question 12

(7 marks)

A moving part in a machine slides along a straight rod with velocity  $v(t)$  cm/s as shown in the graph below, where  $v(t) = a \cos bt$ ,  $a$  and  $b$  both constants.



- (a) If  $x(t)$  locates the position of the moving part relative to a fixed point on the rod, and given that  $x(0) = 0$ , determine an equation for  $x(t)$ . (3 marks)

- (b) Determine the maximum magnitude of acceleration experienced by moving part and when this first occurs for  $t > 0$  seconds. (2 marks)

- (c) Find the distance travelled by the moving part in the first 9 seconds. (2 marks)



Question 13

(9 marks)

A researcher is modelling the size of a fruit bat colony in a protected area. Age-specific female survival ( $s_x$ ) and breeding ( $m_x$ ) rates are shown in the table below, as well as the female population structure ( $n_x$ ) when the study began.

Age ( $x$ ) in months	0-6	6-12	12-18	18-24
Female population ( $n_x$ )	60	150	80	15
Half-yearly female breeding rate ( $m_x$ )	0.0	1.4	1.2	0.6
Half-yearly female survival rate ( $s_x$ )	0.4	0.7	0.4	0.0

The researcher used a Leslie matrix model of the form  $\mathbf{P}_t = \mathbf{L}^t \mathbf{P}_0$  to examine the female population distribution after  $t$  six-month intervals.

(a) Write down the coefficient matrices  $\mathbf{L}$  and  $\mathbf{P}_0$ . (2 marks)

(b) By how many did the number of female fruit bats increase six months after the study began according to this model? (2 marks)

(c) Estimate the female fruit bat population predicted after 3 years. (1 marks)

- (d) After 9 years, what percentage of the female population are breeding females? (2 marks)
- (e) The researcher is confident that the survival rate for 0-6 month old fruit bats can be increased from 40% to 45%. Comment on the effect that this will have on the long-term population of fruit bats predicted by this model. (2 marks)



Question 14

(8 marks)

The temperature in a restaurant cool room is set to 4°C. One day, the refrigerator unit was turned back on after the temperature in the cool room had risen to 27°C due to cleaning and maintenance work. After 15 minutes, the temperature in the cool room had dropped to 11°C, with the temperature,  $T$ , falling according to the model

$$\frac{dT}{dt} = k(T - 4)$$

where  $t$  is the time in minutes since the refrigerator unit was turned back on.

- (a) Find the value of  $k$  and express  $T$  as a function of  $t$ . (5 marks)

- (b) If the temperature continues to fall in this way, how long before the temperature in the cool room registers 4°C, to the nearest degree? (3 marks)

Question 15

(7 marks)

A remote controlled movie camera moves along a length of straight track. During one nine second recording of an action sequence, the initial position of the camera was 70 metres in the positive direction from a fixed point O and at this time it was moving with a velocity of 43 metres per second. The camera experienced an acceleration given by  $a = 12t - 50 \text{ m/s}^2$ , where  $t$  was the time in seconds since the recording began.

In the questions below, consider only the interval  $0 \leq t \leq 9$ .

(a) Determine the time(s) that the camera was at the origin. (3 marks)

(b) What was the maximum distance that the camera was from O? (1 mark)

(c) How far did the camera travel between the times that its velocity was a minimum and a maximum, correct to the nearest centimeter? (3 marks)



Question 16

(10 marks)

A body, A, has an initial position of  $\begin{bmatrix} -7 \\ 21 \\ 6 \end{bmatrix}$  metres and is moving with a constant velocity of  $\begin{bmatrix} 6 \\ 3 \\ -2 \end{bmatrix}$  metres per second.

(a) A second body, B, is moving with constant velocity of  $\begin{bmatrix} 8 \\ 1 \\ -1 \end{bmatrix}$  metres per second and collides with body A after six seconds.

Determine the initial distance apart of body A and body B. (4 marks)



(b) A third body, C, is initially located at  $\begin{bmatrix} 5 \\ -10 \\ 1 \end{bmatrix}$  metres and is also moving with a constant

velocity  $\begin{bmatrix} 2 \\ y \\ -3 \end{bmatrix}$ . After five seconds, the distance between bodies A and C is a minimum.

Find the value of  $y$  for which the speed of C is also a minimum.

(6 marks)

Question 17

(6 marks)

Given the identity  $2 \cos A \sin B = \sin(A + B) - \sin(A - B)$ , prove by induction that for integers  $n \geq 1$ ,

$$\cos \theta + \cos 3\theta + \cos 5\theta + \dots + \cos(2n - 1)\theta = \frac{\sin 2n\theta}{2 \sin \theta}.$$

**Question 18**

**(7 marks)**

A video camera, located on an overhead gantry 10.8m above the surface of a level freeway, is tracking the front licence plate of a car driving directly towards it at 135km/h. The camera automatically adjusts its angle of depression so that it is always pointing directly at the centre of the licence plate, which in this case is 30cm above the ground.

Find the rate at which the angle of depression of the camera is changing when the front of the car is 36m from a point directly beneath the video camera.



**Additional working space**

Question number(s): \_\_\_\_\_